

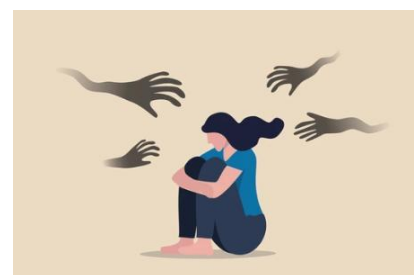
Sexual Abuse

Sexual Abuse can include rape, indecent exposure, sexual harassment, inappropriate looking or touching, sexual teasing or innuendo, sexual photography, subjection to pornography or witnessing sexual acts, indecent exposure and sexual assault or sexual acts to which the adult has not consented or was pressured into consenting.

Signs of Sexual Abuse

There are a number of physical signs to look out for:

- Cuts, bruises and marks – particularly to the thighs, buttocks, upper arms, and neck.
- Irritation, pain or bleeding in the genital area.
- Torn, stained, or bloody underclothing.
- Unprecedented difficulty walking or sitting.
- Infections, STDs, or unexplained genital discharges.
- Pregnancy (if the woman is unable to consent to sexual intercourse).
- Incontinence that's not related to any medical diagnosis.
- The uncharacteristic use of explicit sexual language or significant changes in sexual behaviour or attitude.
- Changes in sexual behaviour or attitude
- Incontinence not related to any medical diagnosis
- Self-harming
- Poor concentration, withdrawal, sleep disturbances
- Excessive fear/apprehension of or withdrawal from relationship relationships
- Fear of receiving help with personal care
- Reluctance to be alone with a particular person



Help and support

- If someone is in immediate danger call the Police on 999.
- To make a safeguarding referral visit: [Report abuse/neglect of a vulnerable adult](#) or contact the Community Adult Front Door on 01942 828777.
- - [Locala](#) Sexual Health Clinic
- - [St. Mary's](#) Sexual Assault Referral Centre provide a safe space for people who have been raped, sexually assaulted or abused.
- - [Victim Support Charity](#)

Sexual Abuse

What is Sexual Abuse?

Sexual abuse is any unwanted sexual activity that occurs without consent.

Key Characteristics

- Rape, attempted rape or sexual assault
- Inappropriate touch anywhere
- Inappropriate looking, sexual teasing or innuendo or sexual harassment
- Sexual photography or forced use of pornography
- Indecent exposure

Signs of Sexual Abuse

- Bruising, particularly to the thighs, buttocks and upper arms
- Torn, stained or bloody underclothing
- Bleeding, pain or itching in the genital area
- Unusual difficulty in walking or sitting
- Infections or sexually transmitted diseases
- Poor concentration, withdrawal, sleep disturbances
- Excessive fear/apprehension

Legal Framework

- The Care Act 2014
- Sexual Offences Act 2003